



ANTONINI
NAVI



SEAMORE 34





EXTERIOR DESIGN



EXTERIOR DESIGN



EXTERIOR DESIGN



EXTERIOR DESIGN



groupe
partelle
du poppe

boat

INTERIOR DESIGN



MAIN SALOON



MAIN SALOON





DINING ROOM



DINING ROOM



MASTER CABIN



MASTER CABIN



MASTER CABIN



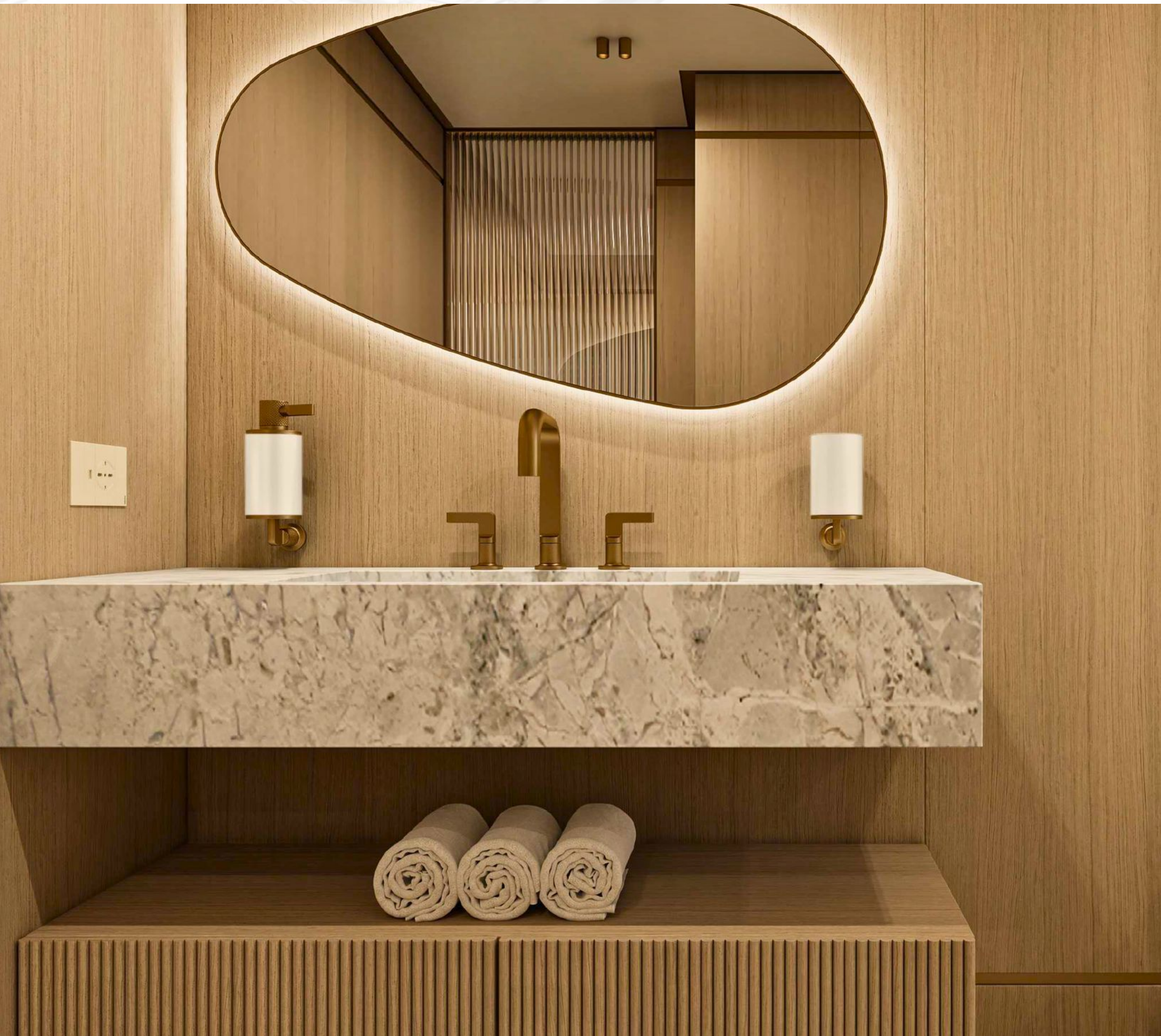
VIP CABIN



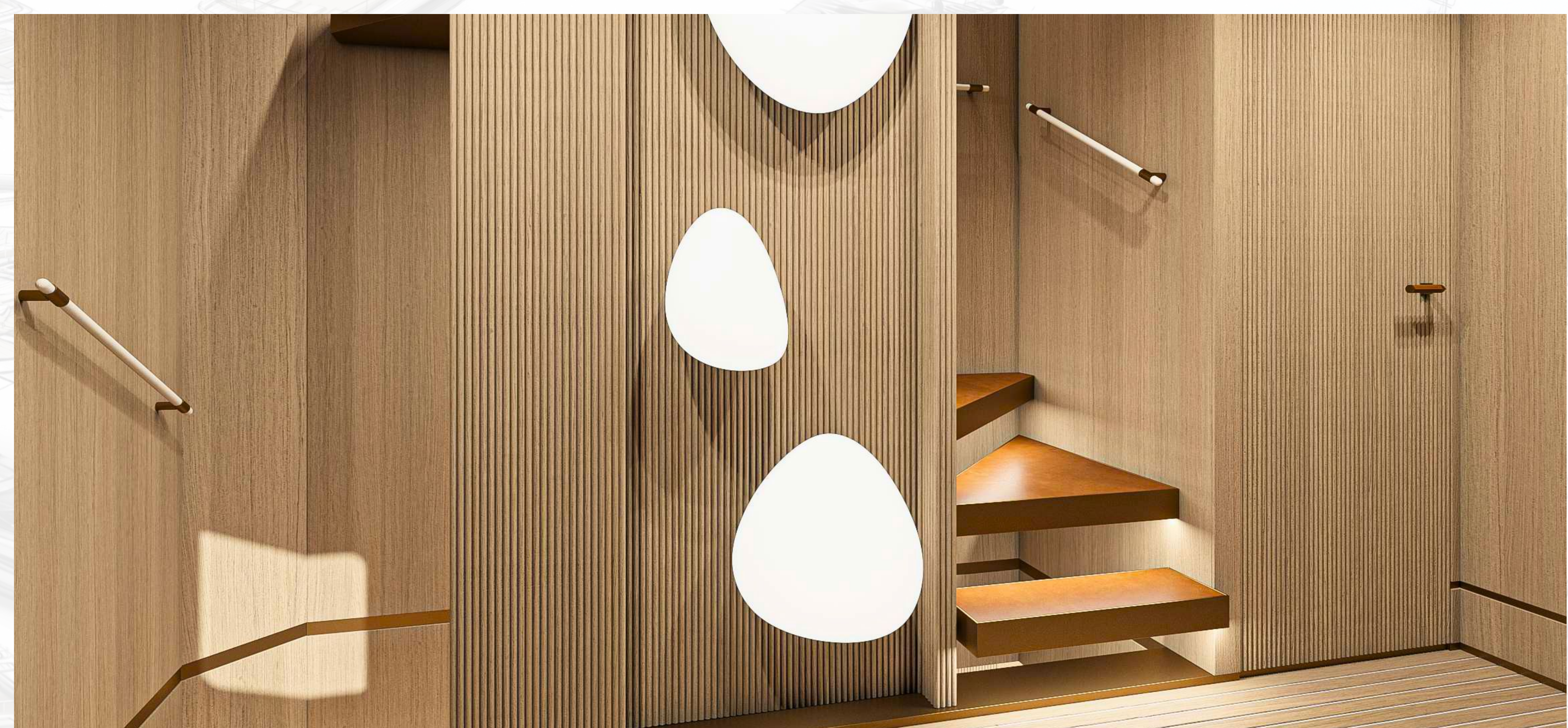
VIP CABIN



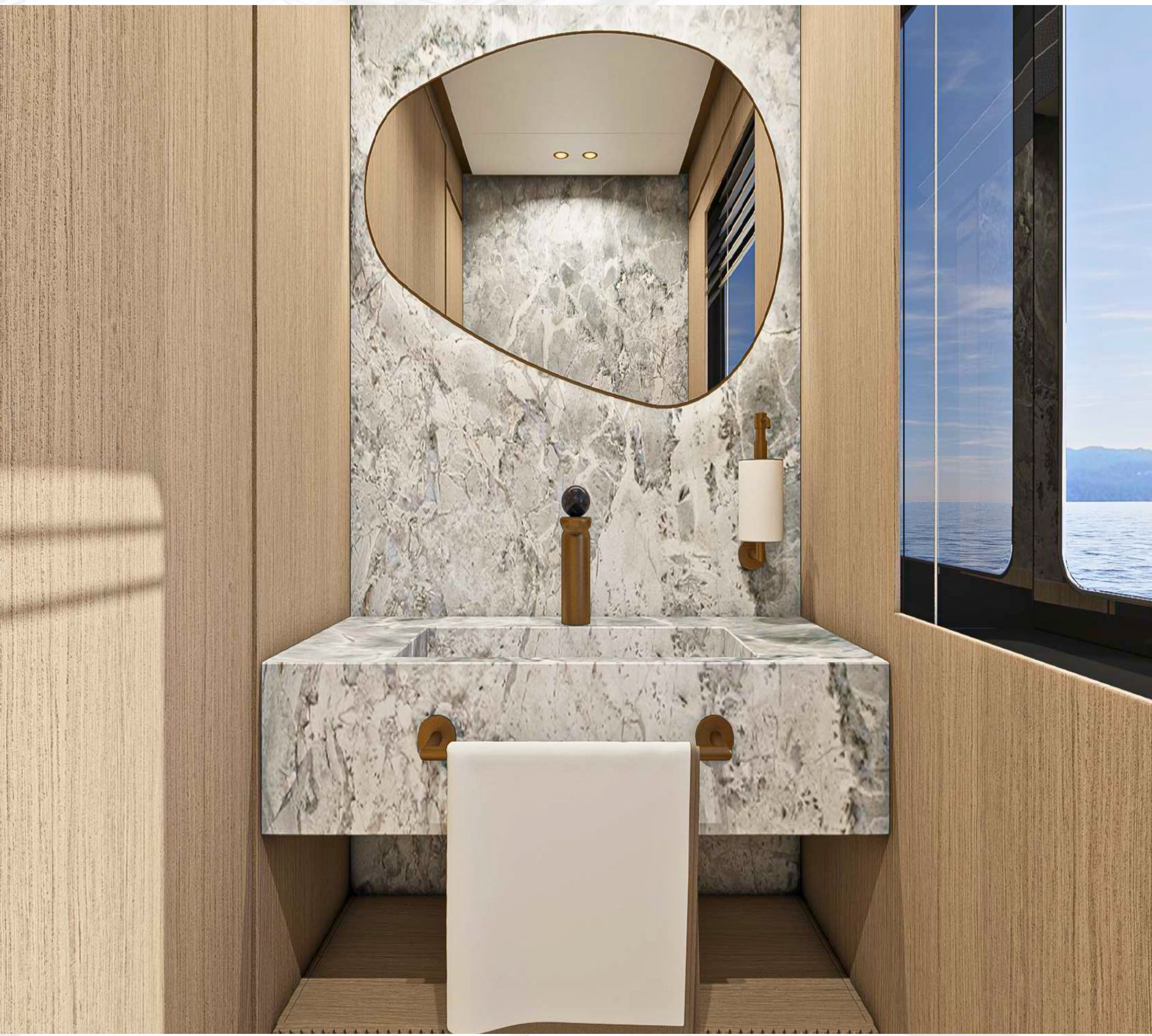
TWIN DOUBLE CABIN



TWIN DOUBLE CABIN



LOBBY



LOBBY





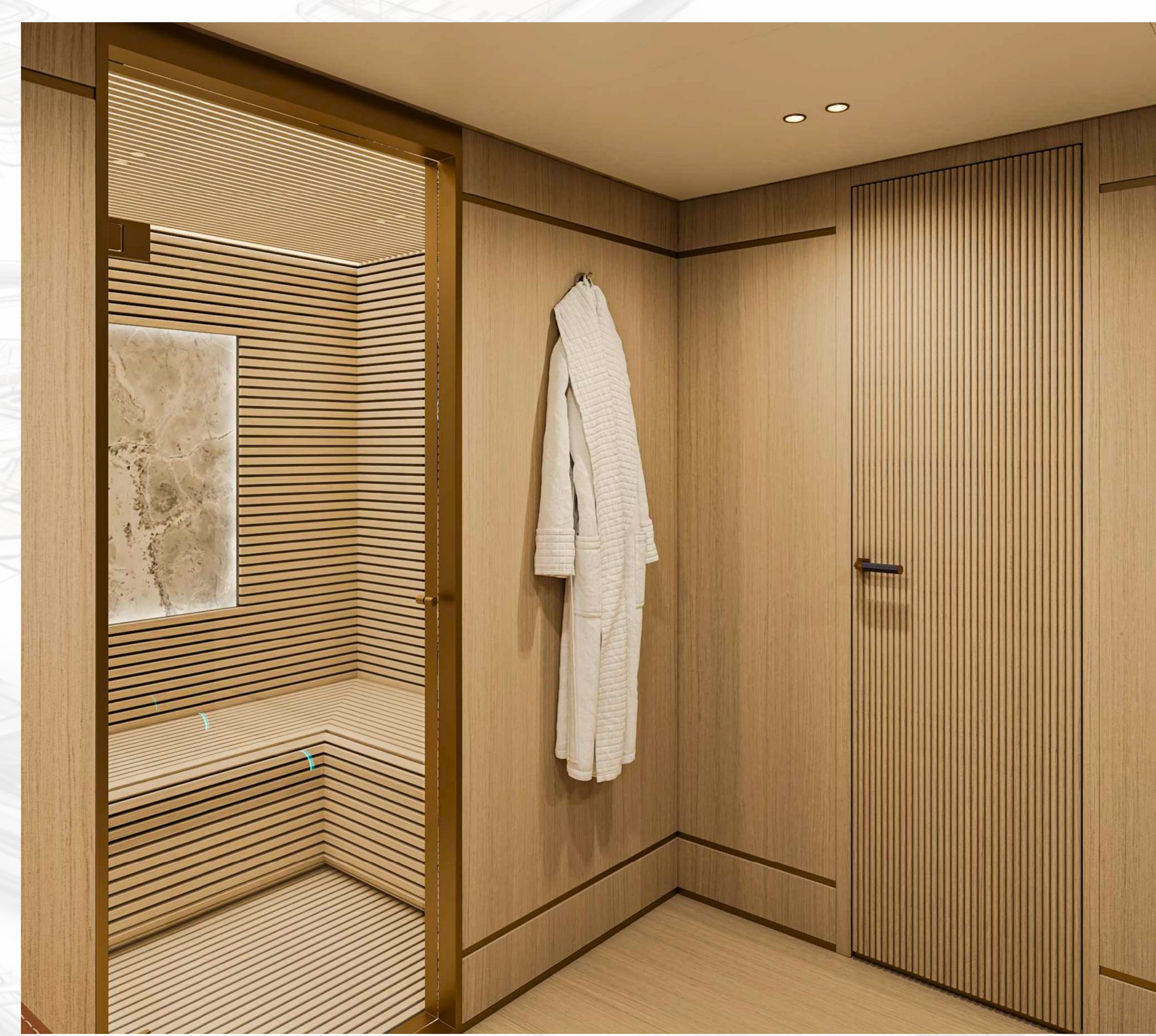
GALLEY



GALLEY



SPA



SPA



WHEELHOUSE



WHEELHOUSE

TECHNICAL SPECIFICATION

SEAMORE 34

Builder	Antonini Navi
Concept	Antonini Navi
External Design	Hydrotec
Interior Design	Hot Lab

MATERIALS

Hull	Steel
Superstructure	Aluminium

DIMENSIONS

Length over all (LOA)	33.5 m
Length waterline (LWA)	32.50 m
Hull Beam	7.80 m
Depth, amidship	4.0 m
Draught, full load under the keel	2,40 m

GROSS TONNAGE <300 GT

DIMENSIONS

Displacement, light	244,0 t
Displacement, half load	257,0 t
Displacement, full load	275,0 t

PROPULSION

2X Caterpillar C18.....2 X 533 KW @ 1800-2100 rpm

ELECTRICAL GENERATING PLANT:

2 x Kohler 55 KW @ 1500 rpm
50 Hz, power factor 0.8, normal duty

ENGINES CHARACTERISTICS

2X CATERPILLAR C18 Acert
Max rated power.....533 KW @ 1800-2100 rpm

TECHNICAL SPECIFICATION

SEAMORE 34

PERFORMANCE

Maximum speed	13,0 Knots
Cruising Speed	12,0 Knots
Economical Speed	10,0 knots

BOW THRUSTER

1 X CMC | 1 X 55 KW

STABILIZER

2 X CMC LR 090

DESALINATION PLANT

2 X CMC LR 090

1 X Idromar | 6.240 l/day

TANK CAPACITY - NET VOLUME [L]

Gasoline (Including service tanks)	42.000
Acqueous Urea Solution (AUS)	2200
Fresh water	6000
Black water	1000
Gray water	7000
Bilge	500

ACCOMMODATION

Guest	10
Crew	6

TECHNICAL SPECIFICATION

SEAMORE 34

HEIGHTS BETWEEN DECK (interior decks)

Main Deck to Upper Deck 2450 mm

Lower Deck to Main Deck 2600 mm

NOISE LIMITS IN DIFFERENT YACHT'S OPERATING CONDITIONS – dB(A)

Owner's Cabin 52 dB(A)

VIP/Junior Suites 55 dB(A)

Crew Cabins 55 dB(A)

Main Deck Saloon 55 dB(A)

Dining/Meeting Room 50 dB(A)

Bridge 50 dB(A)

Crew Mess 55 dB(A)

C ✱ Hull ● Mach Short Range (for private use of unlimited navigation, for potential future commercial use 'Charter' certification in 'Short Range' limited to 60 miles)

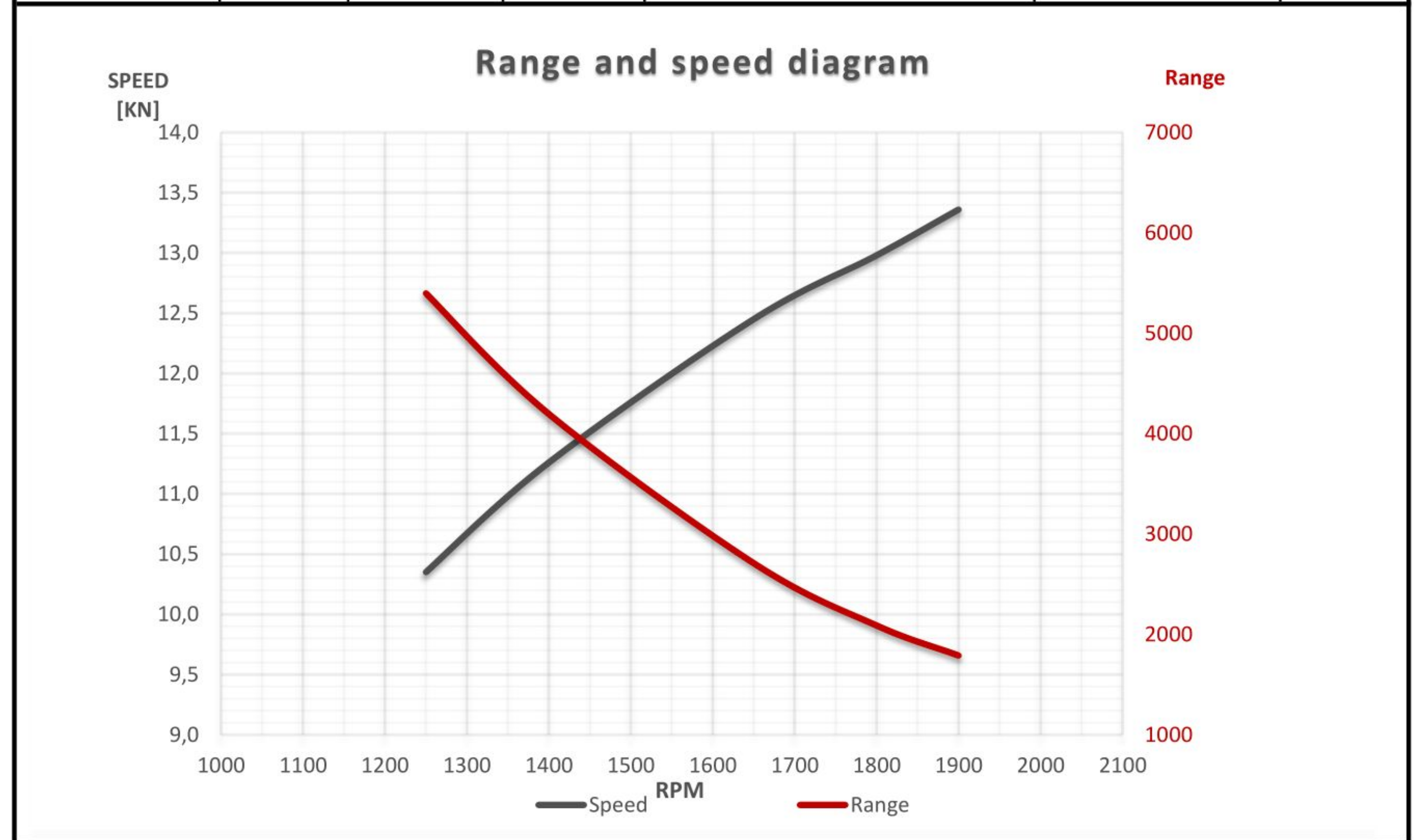
Declaration of conformity with the regulations of the 'REG Yacht Code Part A' as applied by the Cayman Islands 'CISR'

RANGE & SPEED DIAGRAM

SEAMORE 34

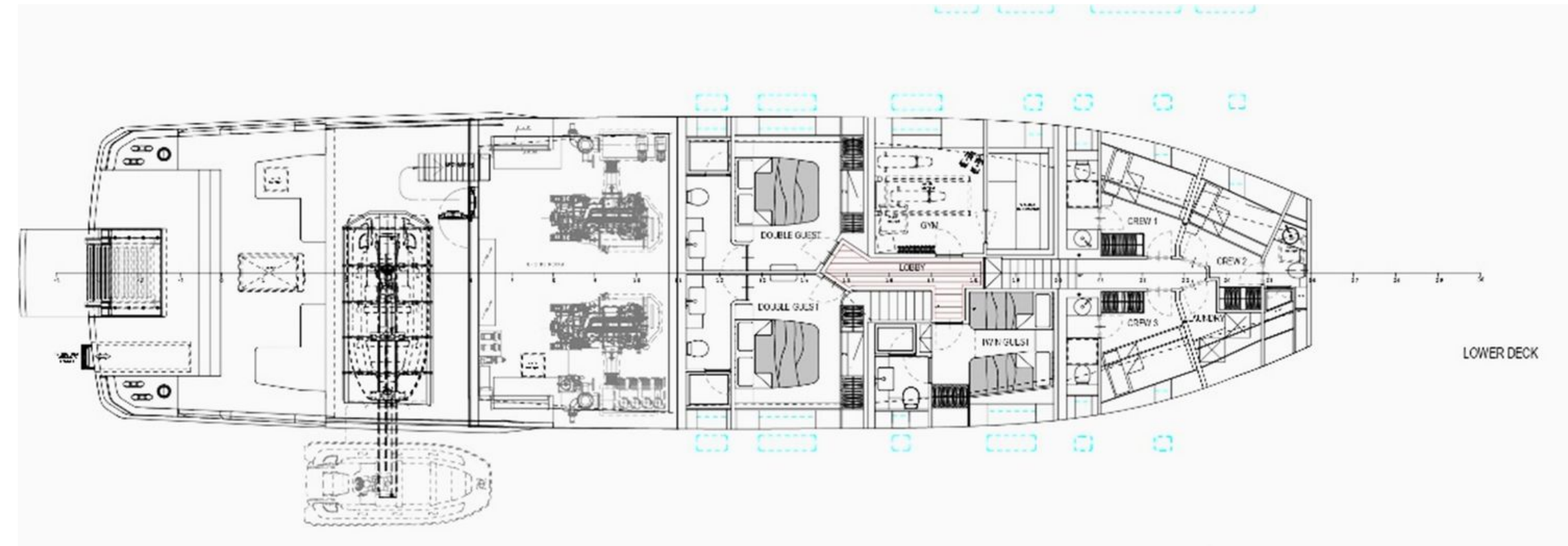
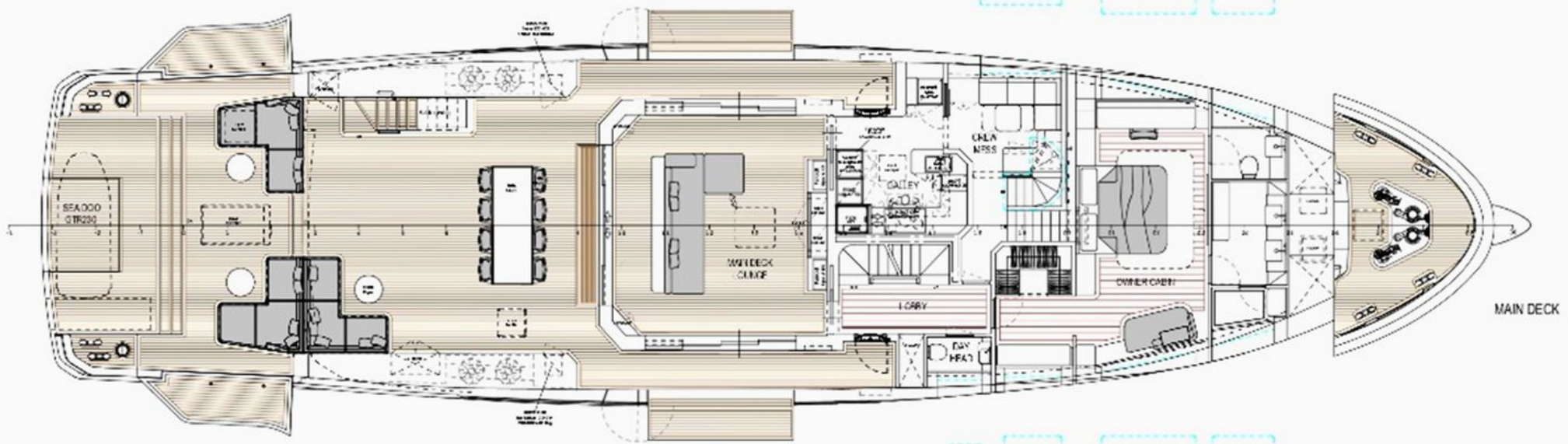
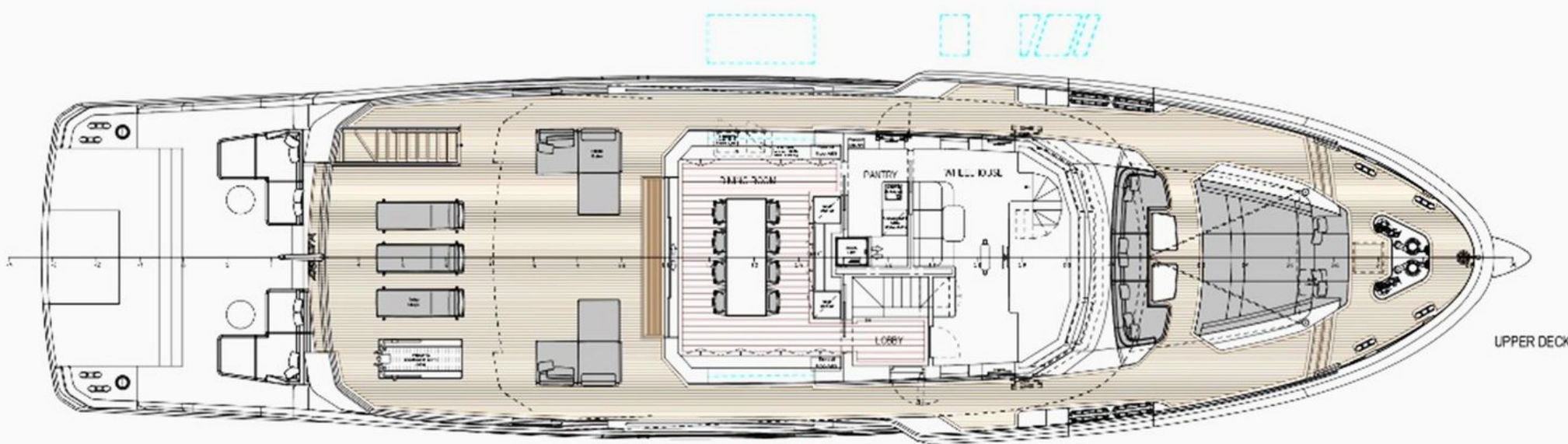
Fuel Density:	835	[g/l]		
Fuel capacity:	43960	[l]		
Genset Fuel Rate:	13	[l/h]	1 Generator Load Assumed	85 %

Specific Consumption [g/kWh]	RPM	Speed [kn]	Power each engine [kW]	Fuel Rate of 2 engines [l/h]	Total Fuel Rate, including genset [l/h]	Range [nm]
212	1250	10,4	124	62,9	75,9	5398
212	1400	11,3	184	93,2	106,2	4196
212	1650	12,5	333	168,8	181,8	2709
212	1800	13,0	459	232,9	245,9	2088
212	1900	13,4	556	282,4	295,4	1789



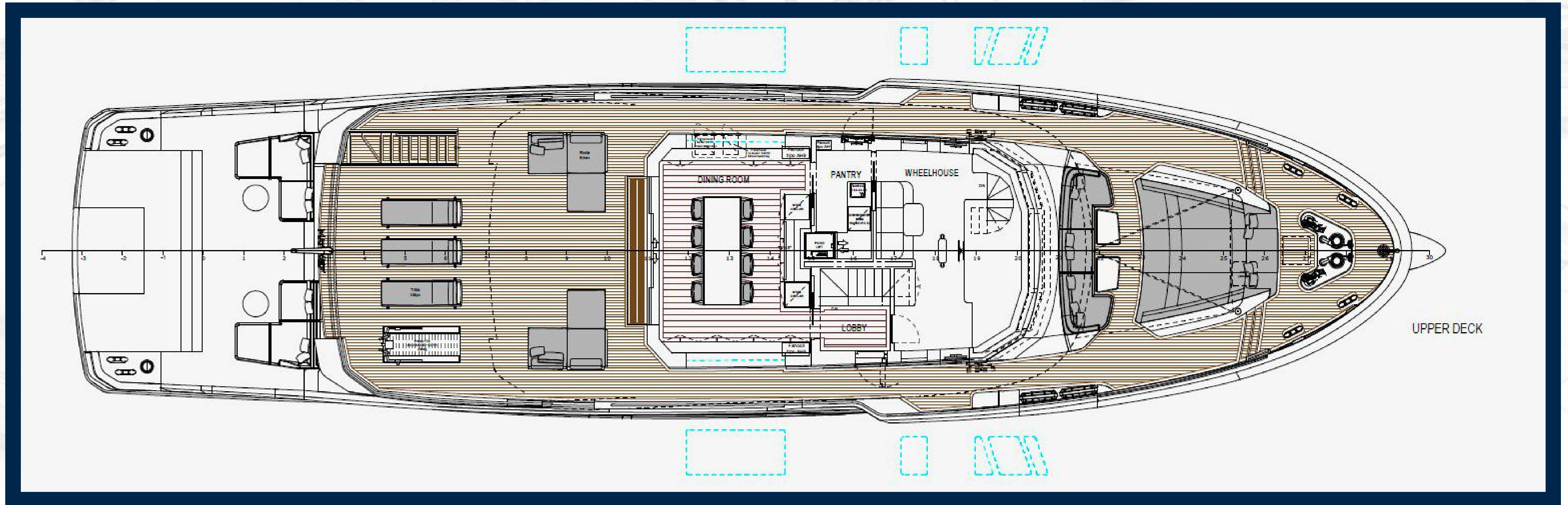
GENERAL ARRANGEMENT

SEAMORE 34



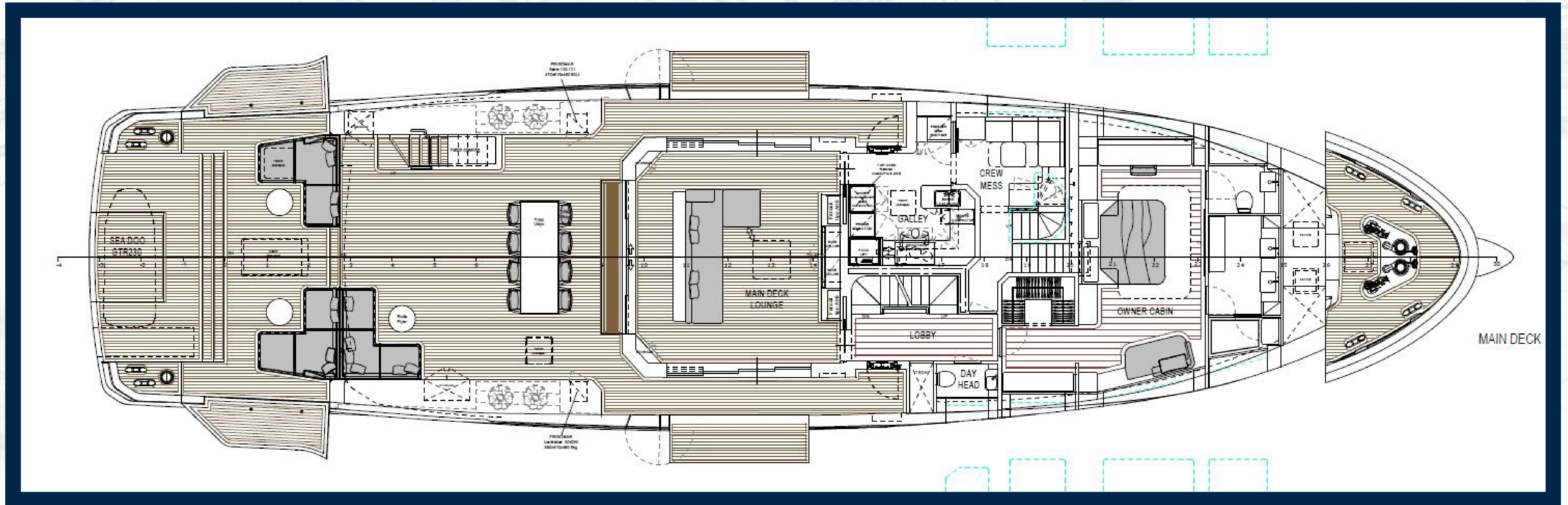
UPPER DECK

SEAMORE 34



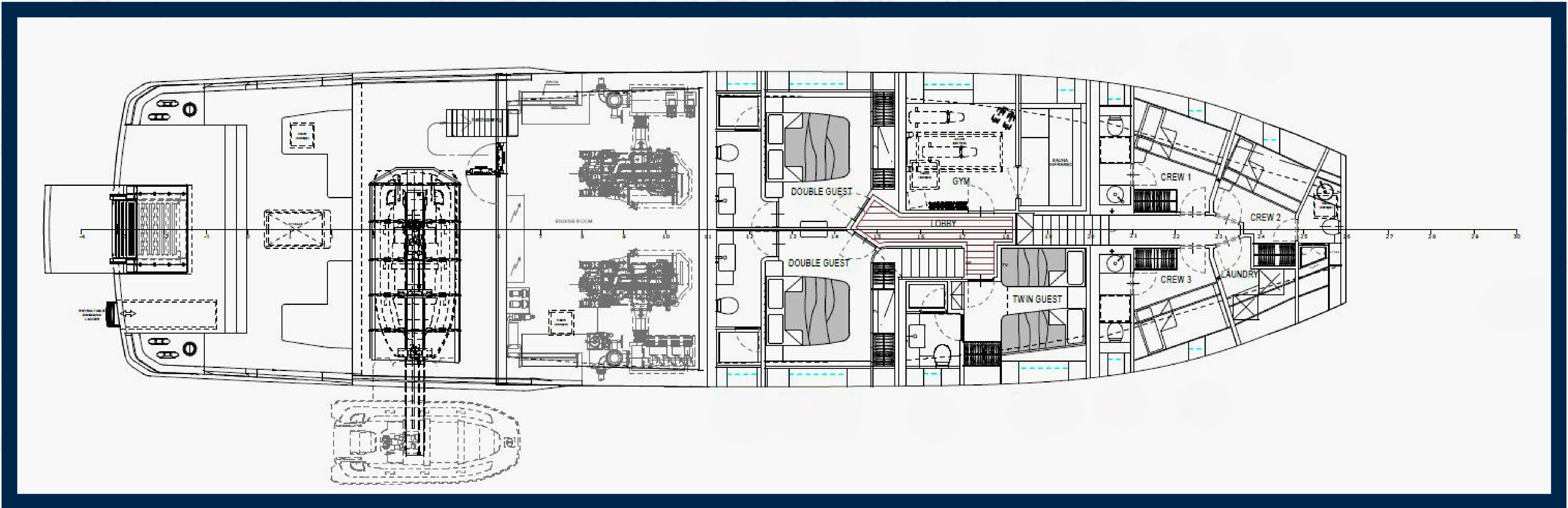
MAIN DECK

SEAMORE 34



LOWER DECK

SEAMORE 34







MATILDE 7

ANTON



ANTONINI
N A V I

ANTONINI NAVI S.R.L

SEDE LEGALE E STABILIMENTO:

LOCALITÀ PERTUSOLA - FRAZIONE MUGGIANO - 19032 LERICI (LA SPEZIA) -ITALY

PH +39 0187 1771300

INFO@ANTONININAVI.COM

WWW.ANTONININAVI.COM - WWW.GRUPPOANTONINI.IT